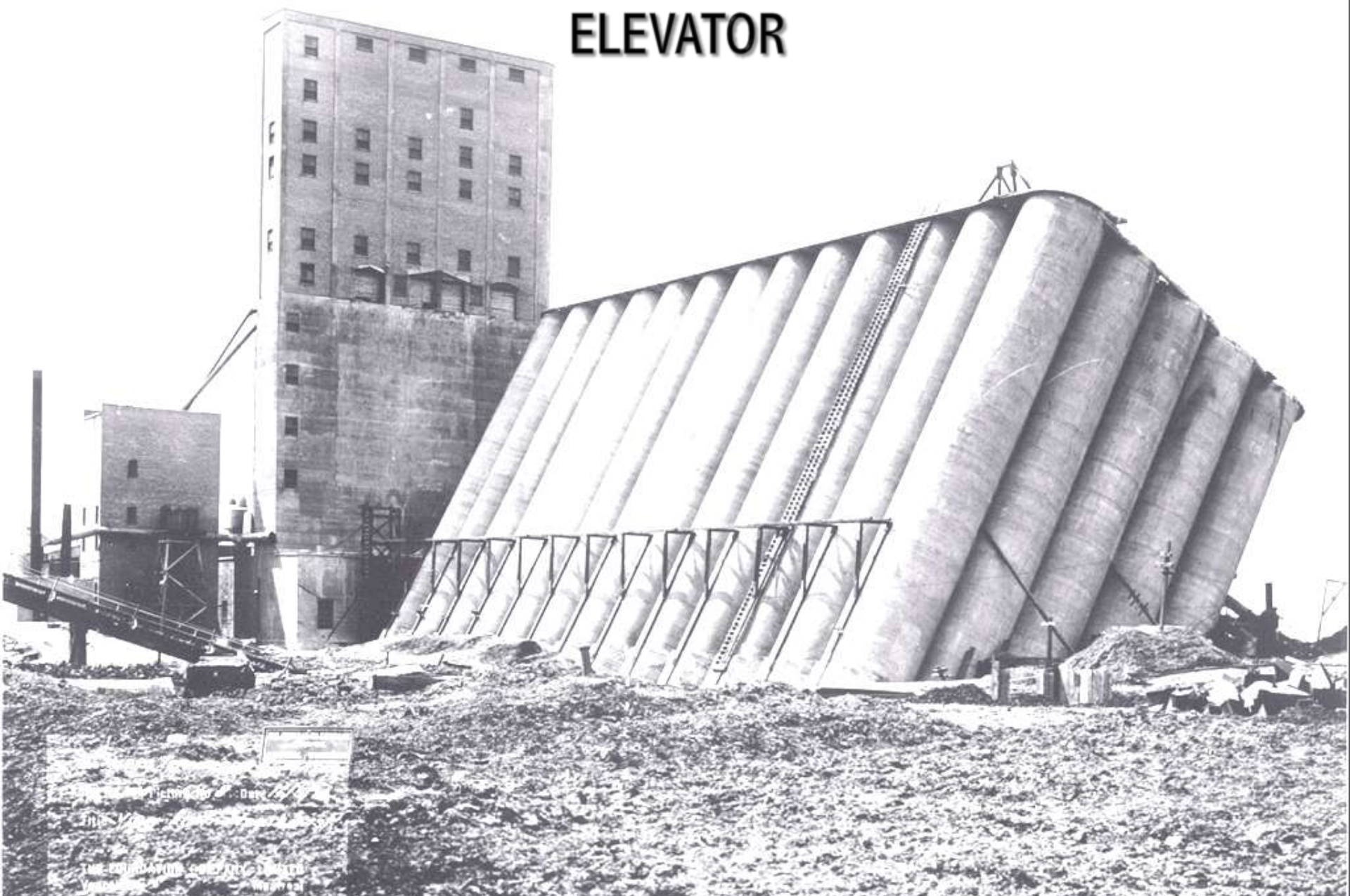


THE FAILURE AND RIGHTING OF THE TRANSCONA GRAIN ELEVATOR

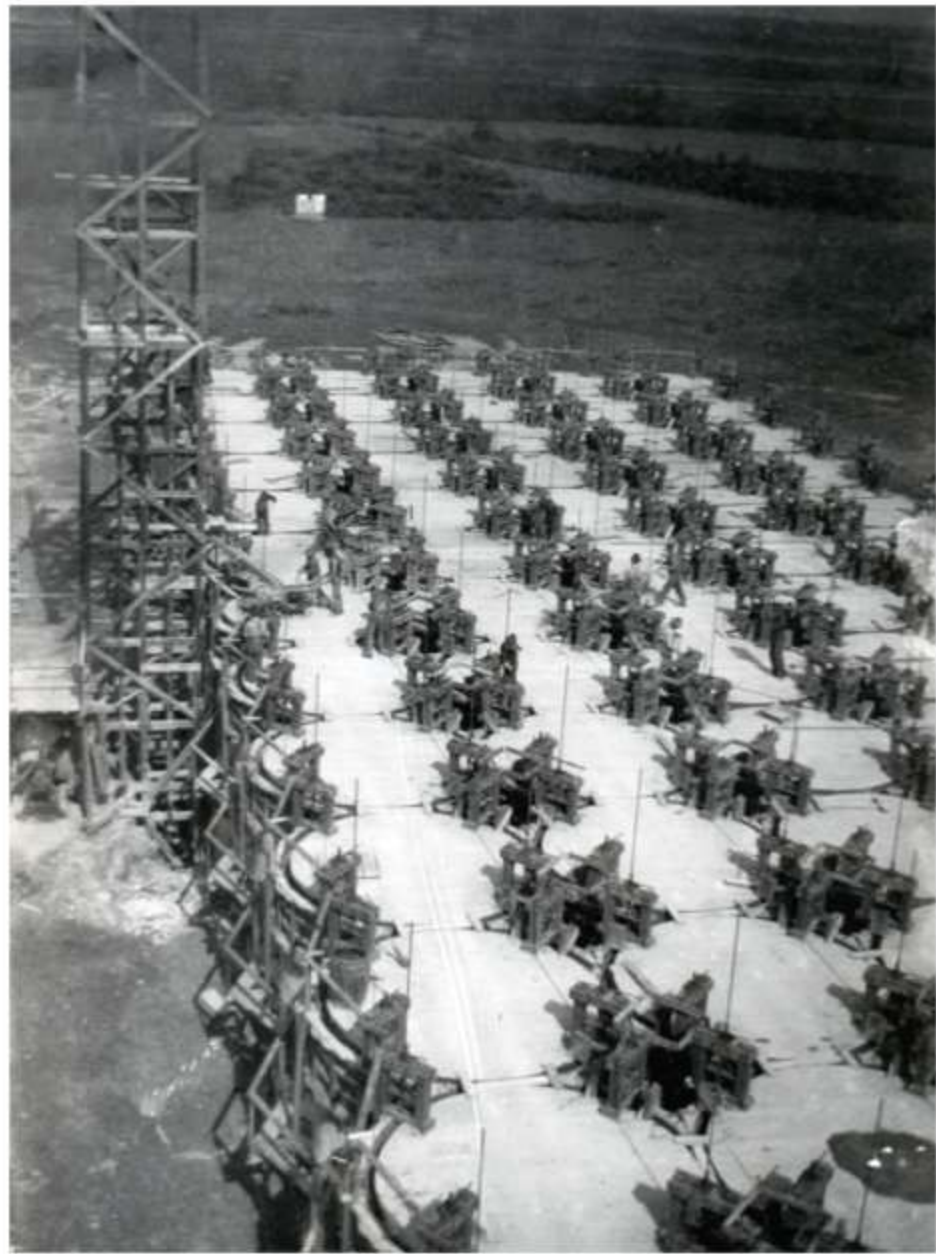


THE TRANSCONA GRAIN ELEVATOR

THE FAILURE

THE FAILURE OF THE TRANSCONA GRAIN ELEVATOR

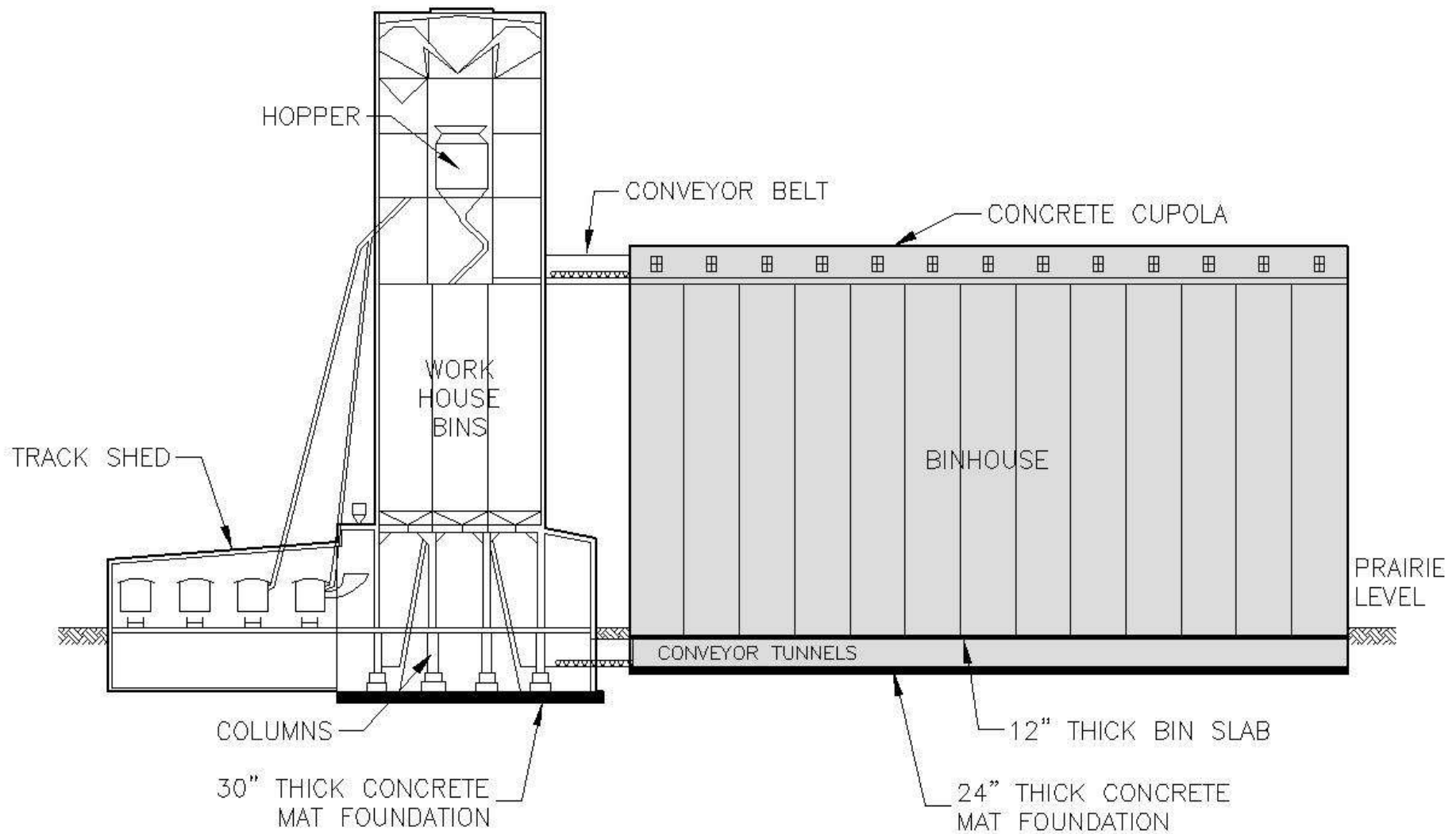
THE FAILURE



Bins Under
Construction
Using Jack Forms



Elevator Before Failure Looking NE



Section Through Elevator – Looking West

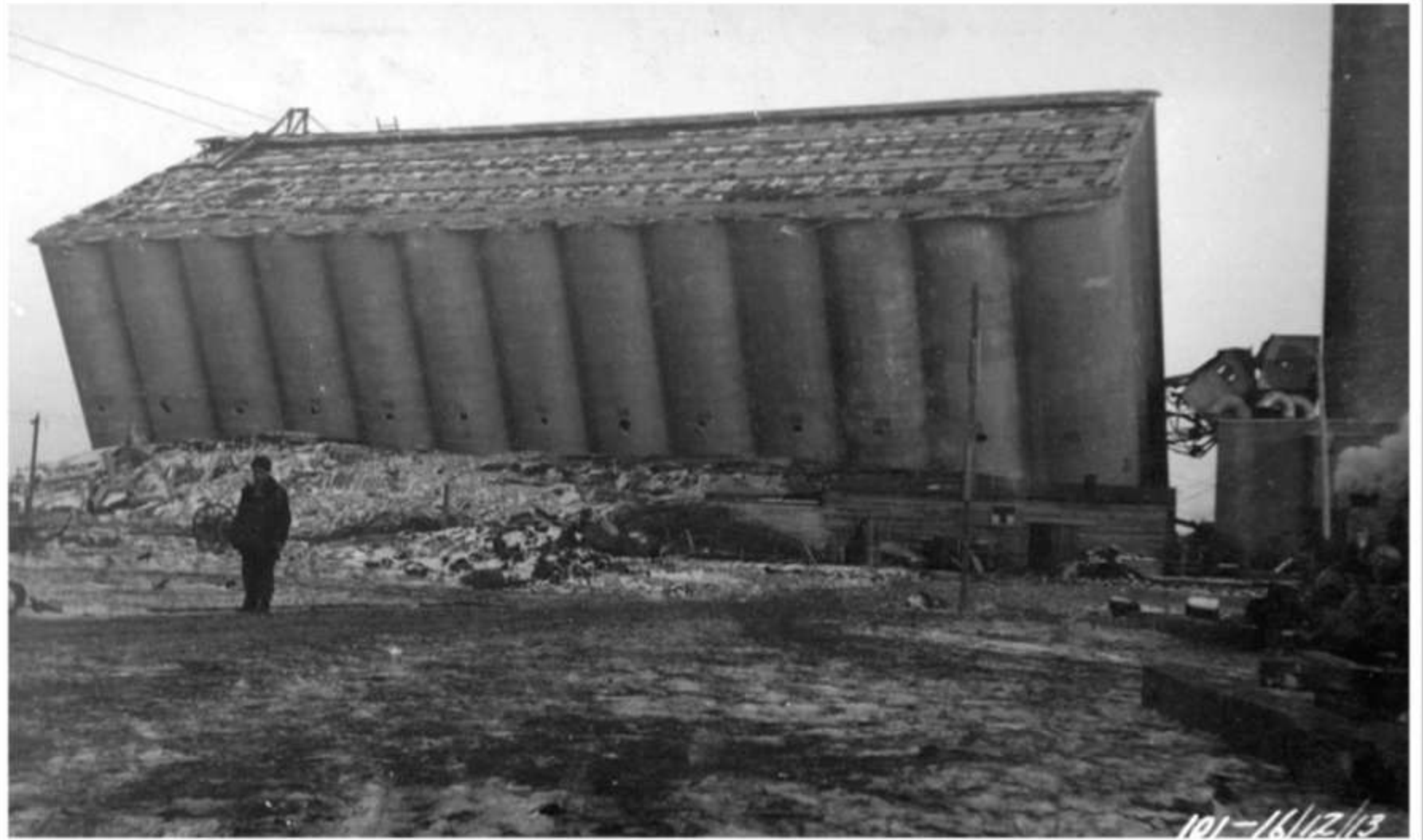
Elevator in 1993

(Now Owned And Operated by Parrish & Heimbecker)





Elevator During Failure – Note Conveyor Belts and Cupola Still Attached



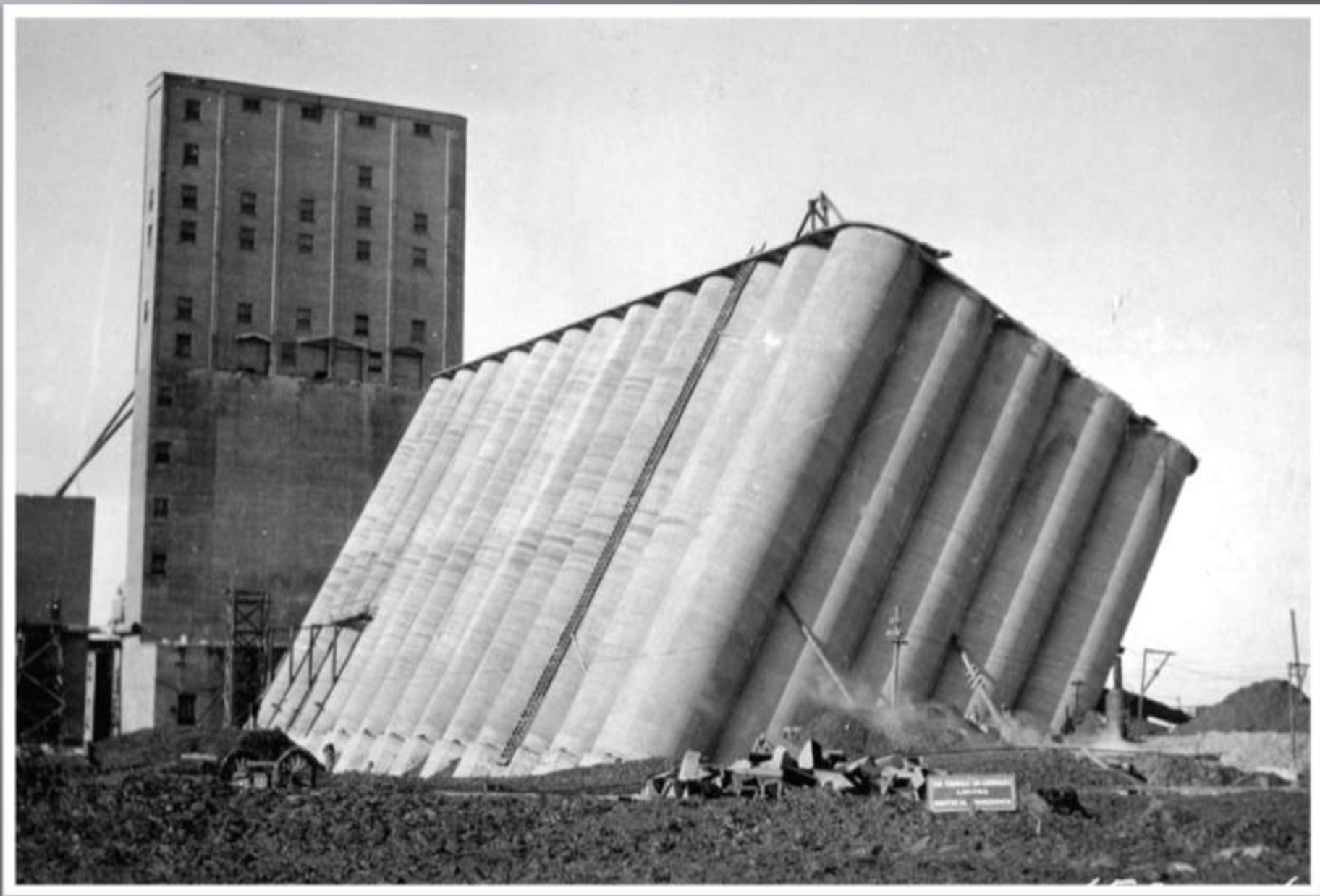
View of Bins Looking East – Note Cupola Detached



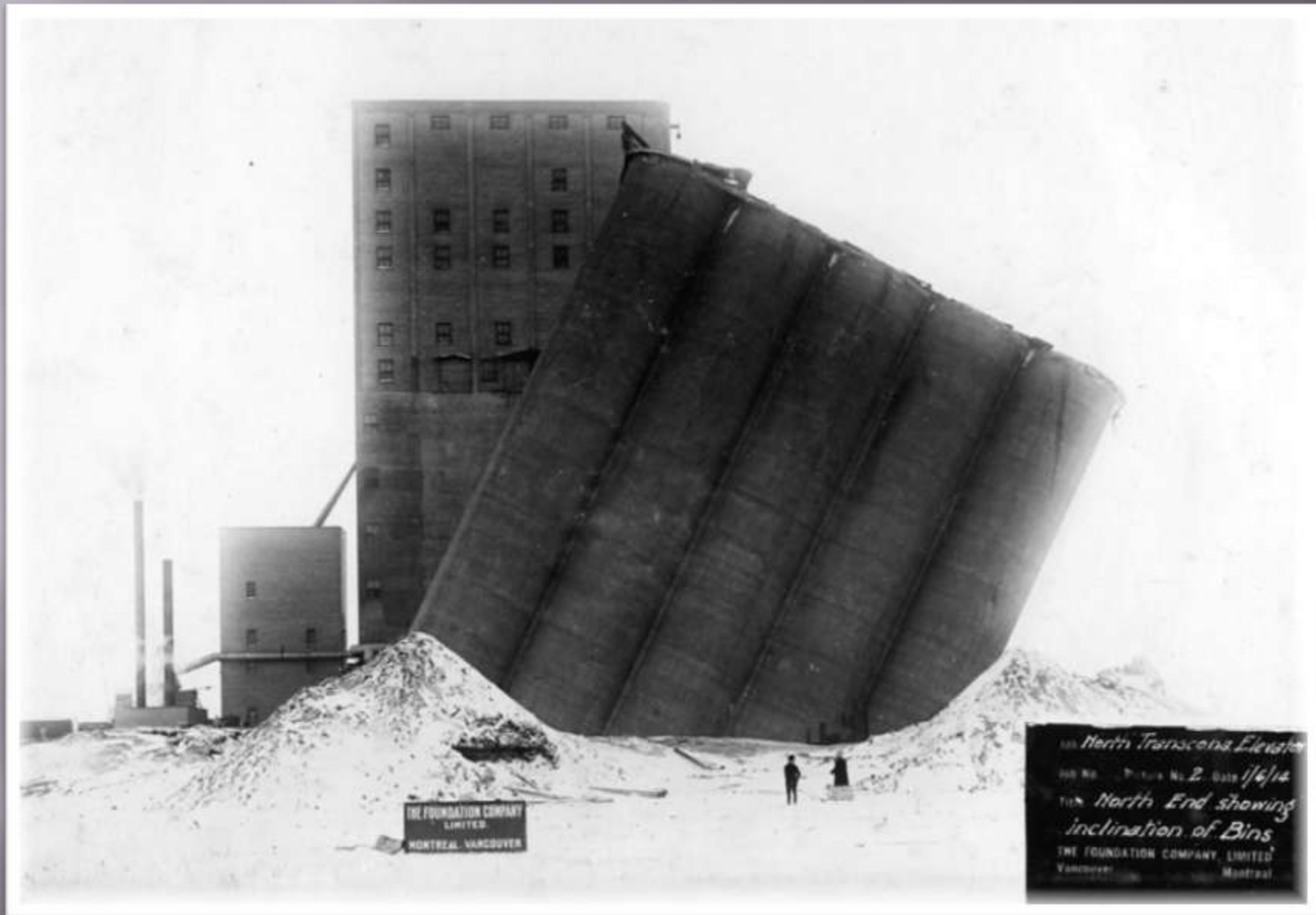
West Side of Elevator After Failure



View of Elevator From South West

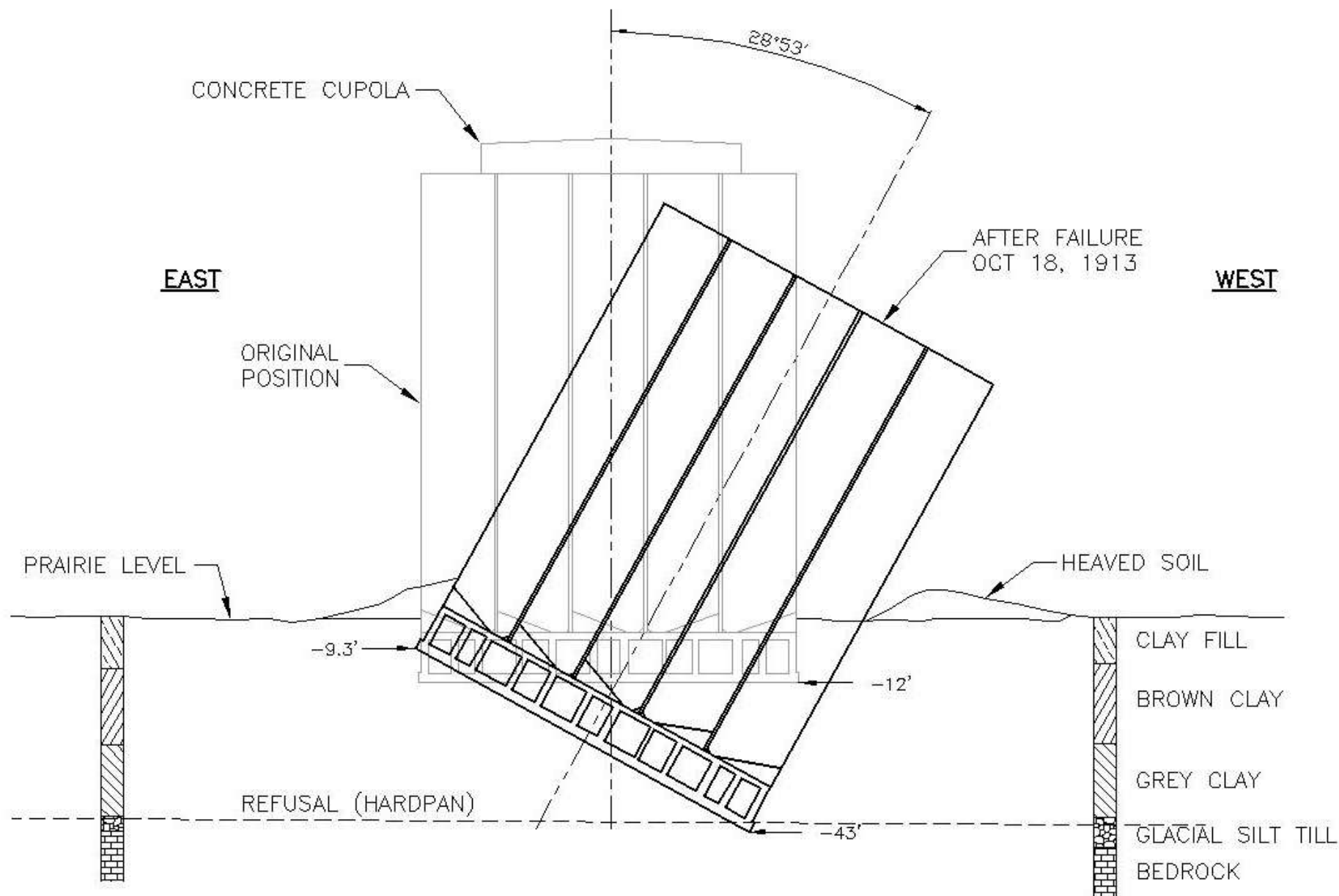


General View of Elevator & Bins From NE



N End Showing Inclination of Bins – Note Heaved Earth

Section Through Elevator Before & After Failure





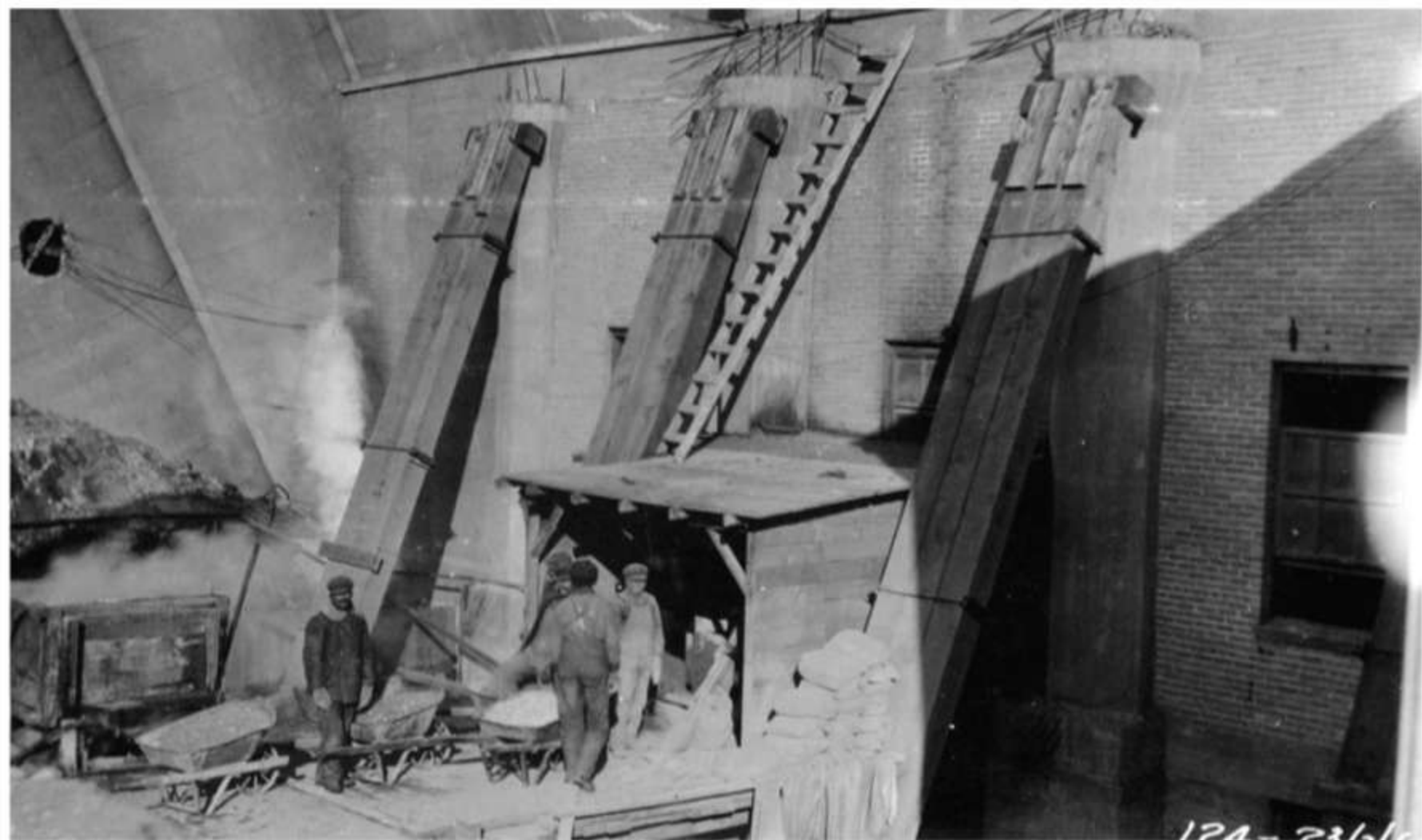
Job No. Picture No. 6 Date
Title *VIEW OF CAMPS*
THE FOUNDATION COMPANY, LIMITED
Vancouver Montreal

View of Construction Camp

UNDERPINNING THE WORKHOUSE



*D. Ferguson (CP
Electrician), A.
Chestnut
(Timekeeper), P.
Burk Gaffney (CP
Inspector)*



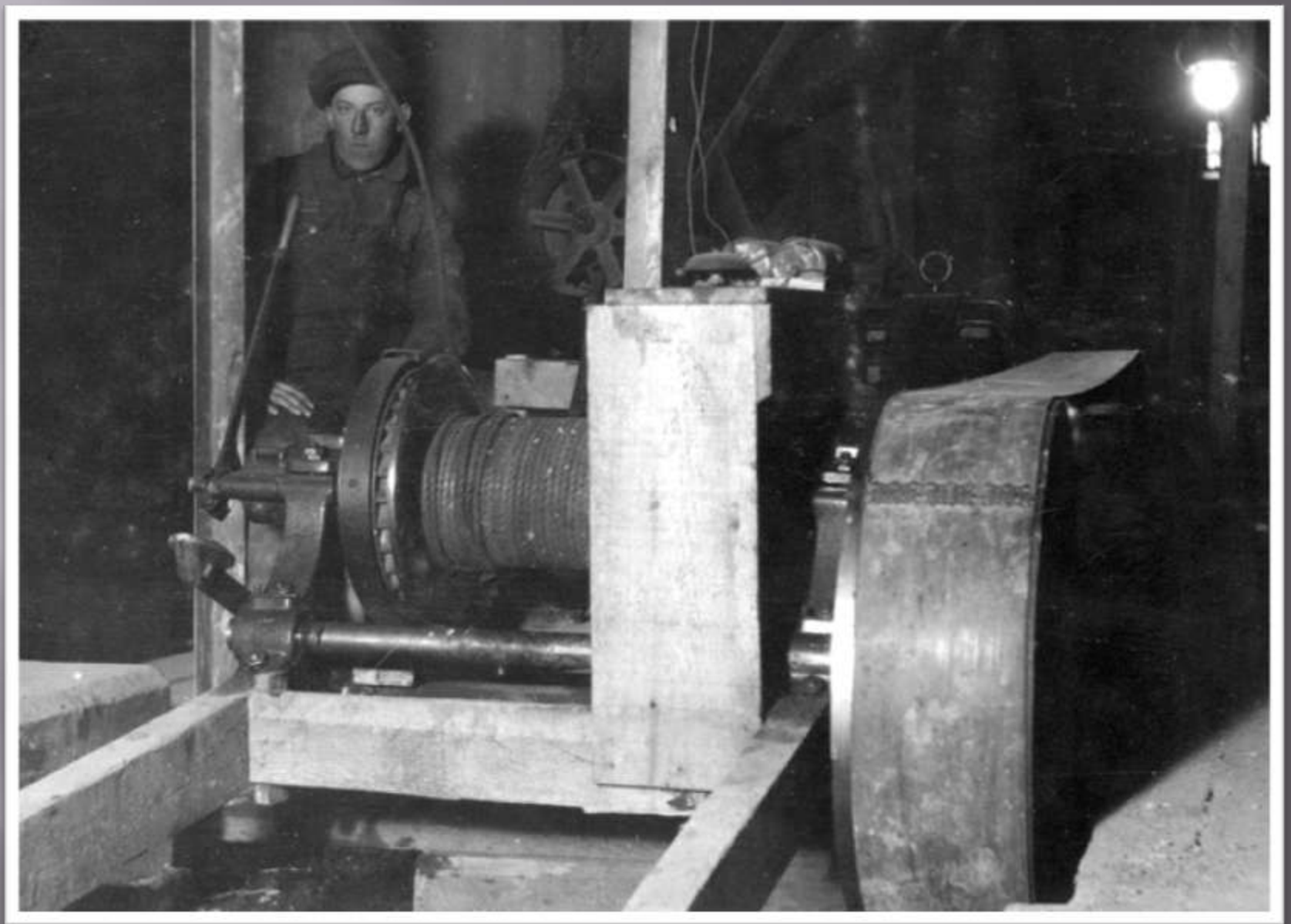
Shores on West Side of Workhouse



Foot and Top of Shores in Workhouse



Disposal of Dirt From Workhouse Basement



Electric Hoist in Workhouse Basement



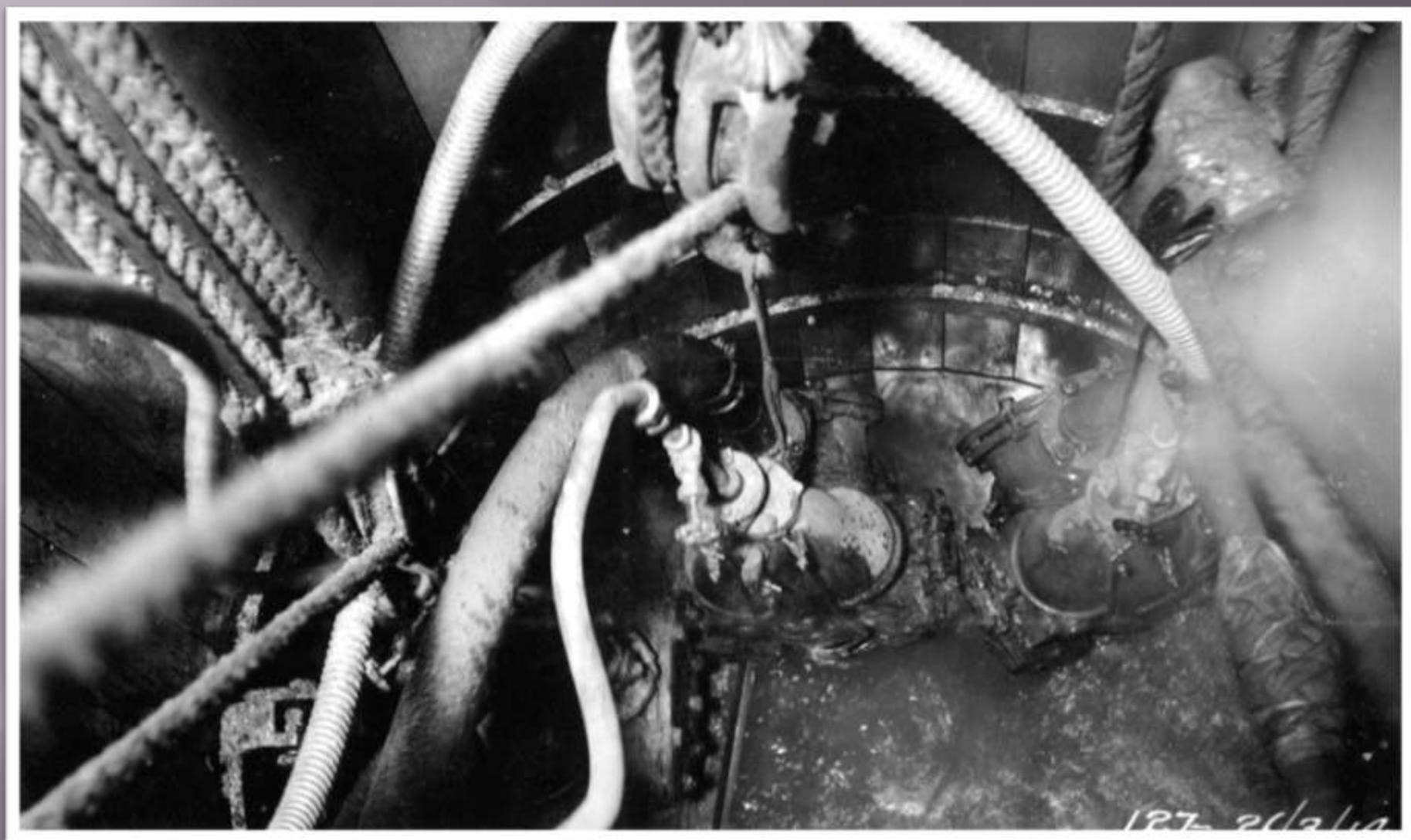
Secondary Shores
in 2nd Floor of
Workhouse



Sinking "Chicago Well"



Curved Skidway For
Hoisting Pails of Dirt
From Chicago Wells



Pulsometer Pumps Barely Holding Water in Well



Steam Driven Piston Pump



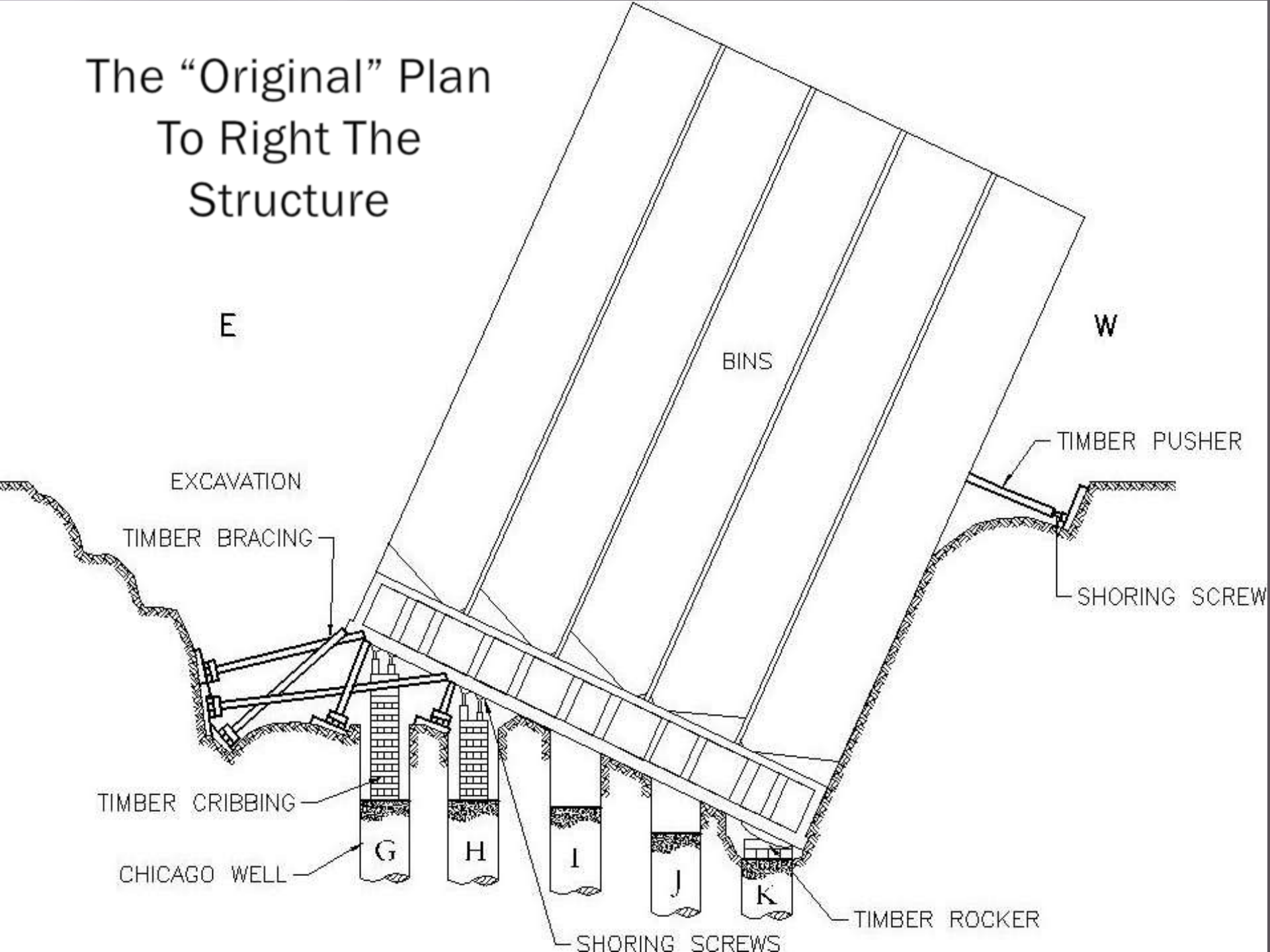
Starting of For Red River at – 32 deg

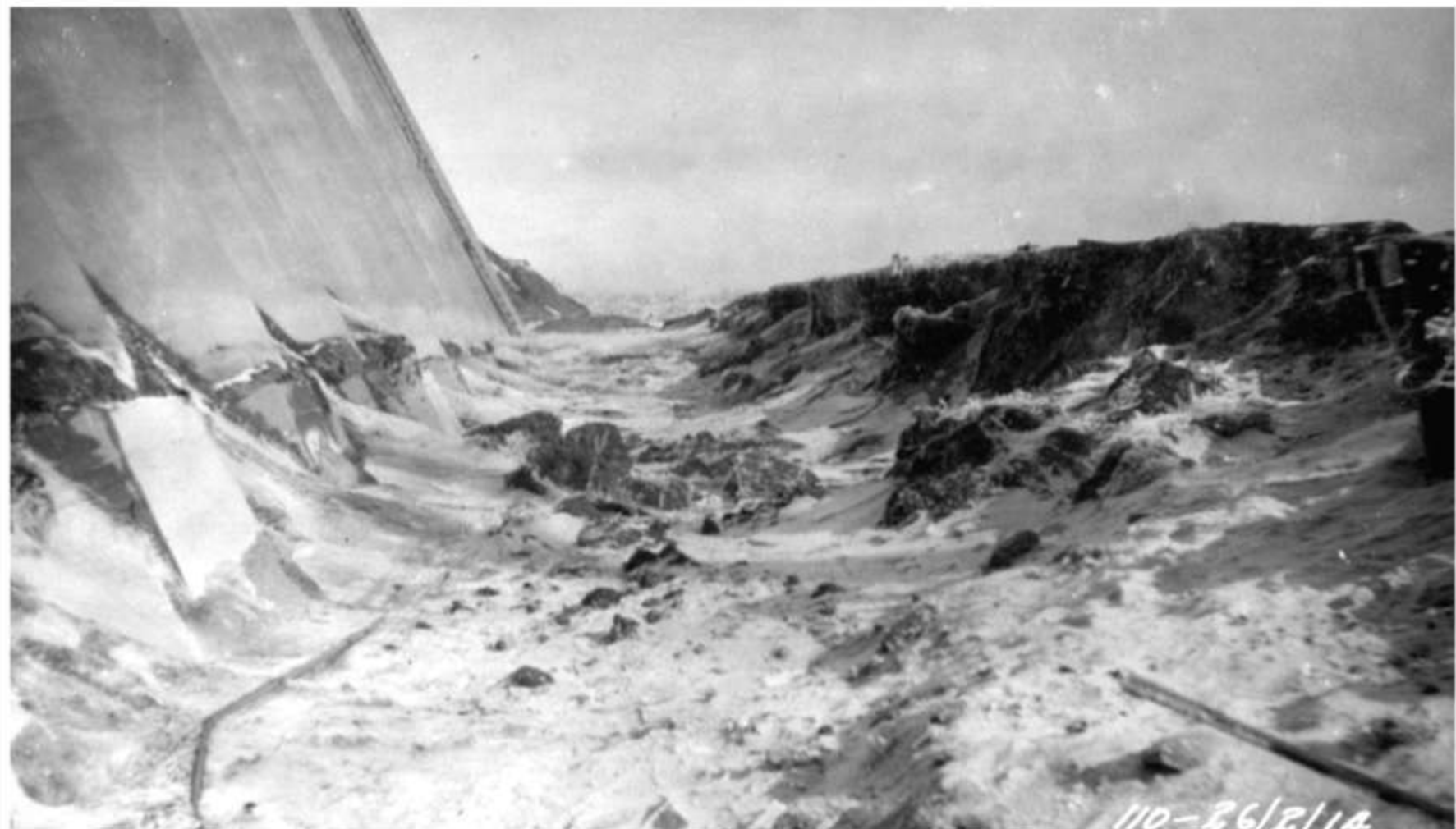
RIGHTING THE BINHOUSE



Unloading Boiler

The "Original" Plan To Right The Structure





Heaved Earth on East Side of Bins Before
Excavating



Opening Trench on E Side of Bins



Excavation on East Side of Bins



East Trench Looking North



East Trench Looking North



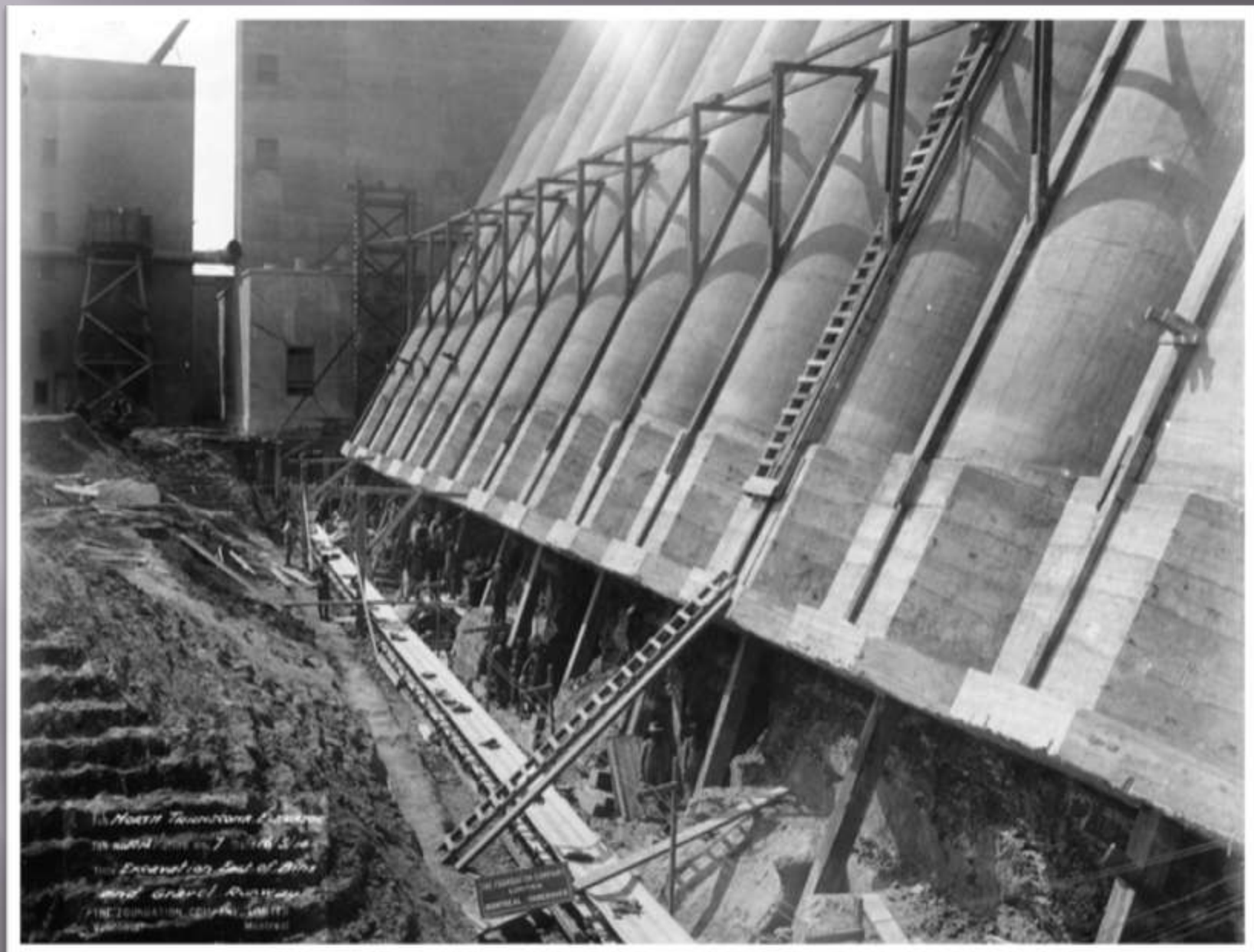
Slide in East Side Trench



Excavating East Side of Bins Looking South



Starting to Drift Tunnels Under Bins



Excavation on East Side of Bins



East Conveyor
Loaded Looking
North



Looking West Through North Conveyor Trench



Lidgerwood Hoist at North End

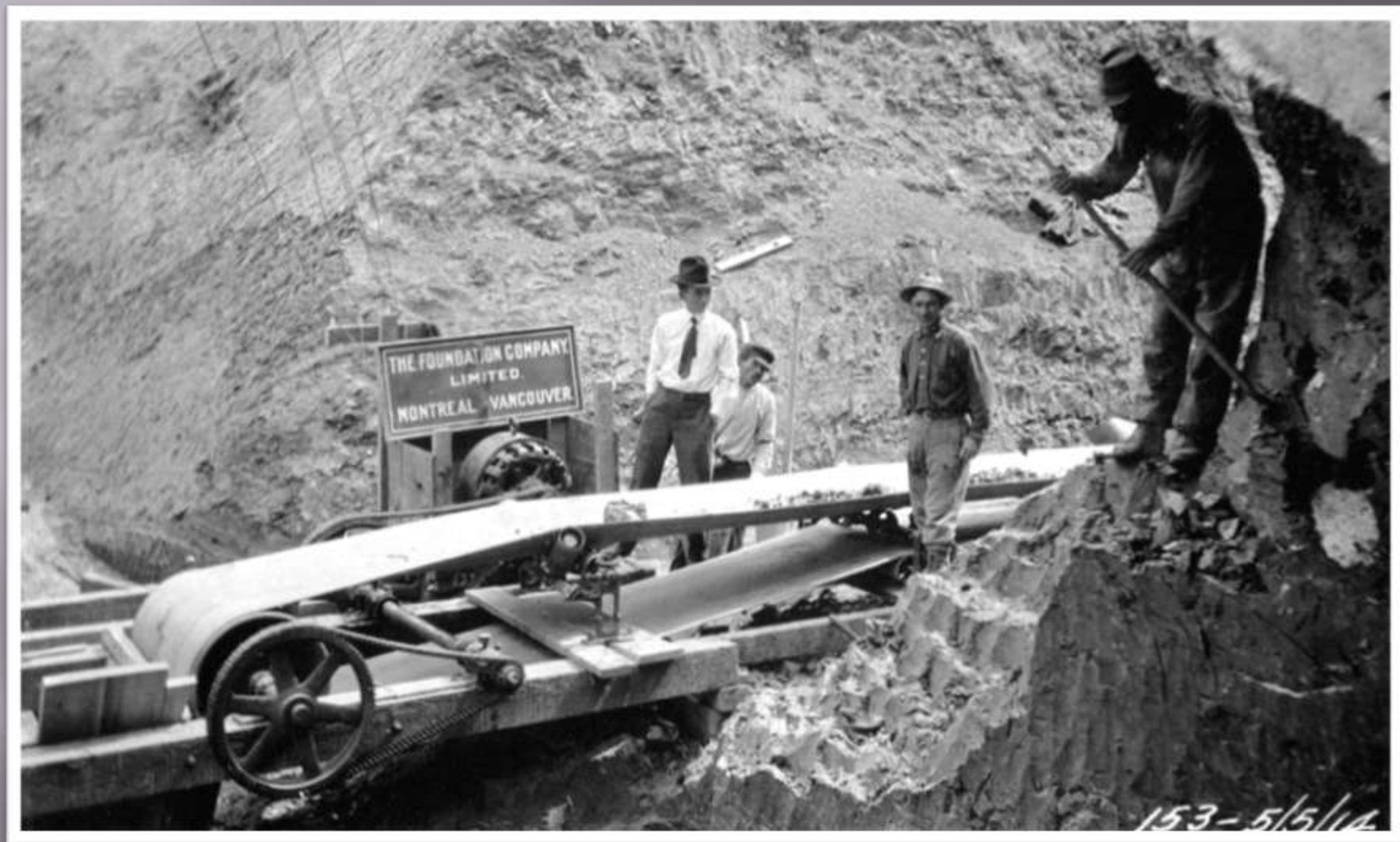


Hauling Dirt Up North
Conveyor Trench

141 - 22/4/14



North and East Conveyor Stringers



Drive and Hopper of East Conveyor



Dirt Hopper
Discharging to
Wagon



Disposal of Earth From East Excavation



Pushers West of Bins



West Side Pushers – Note Holes in Side of Bins to Tap Grain



West Side Pushers



Lowering Pushers on West Side of Bins



Shoring Screws at Foot of Pushers



Timber Pushers on West Side of Bins



Sand in Crevice West of Bins



Kicking Braces in East Trench



Failure of BC Fir Foot
Block of Kicking
Brace



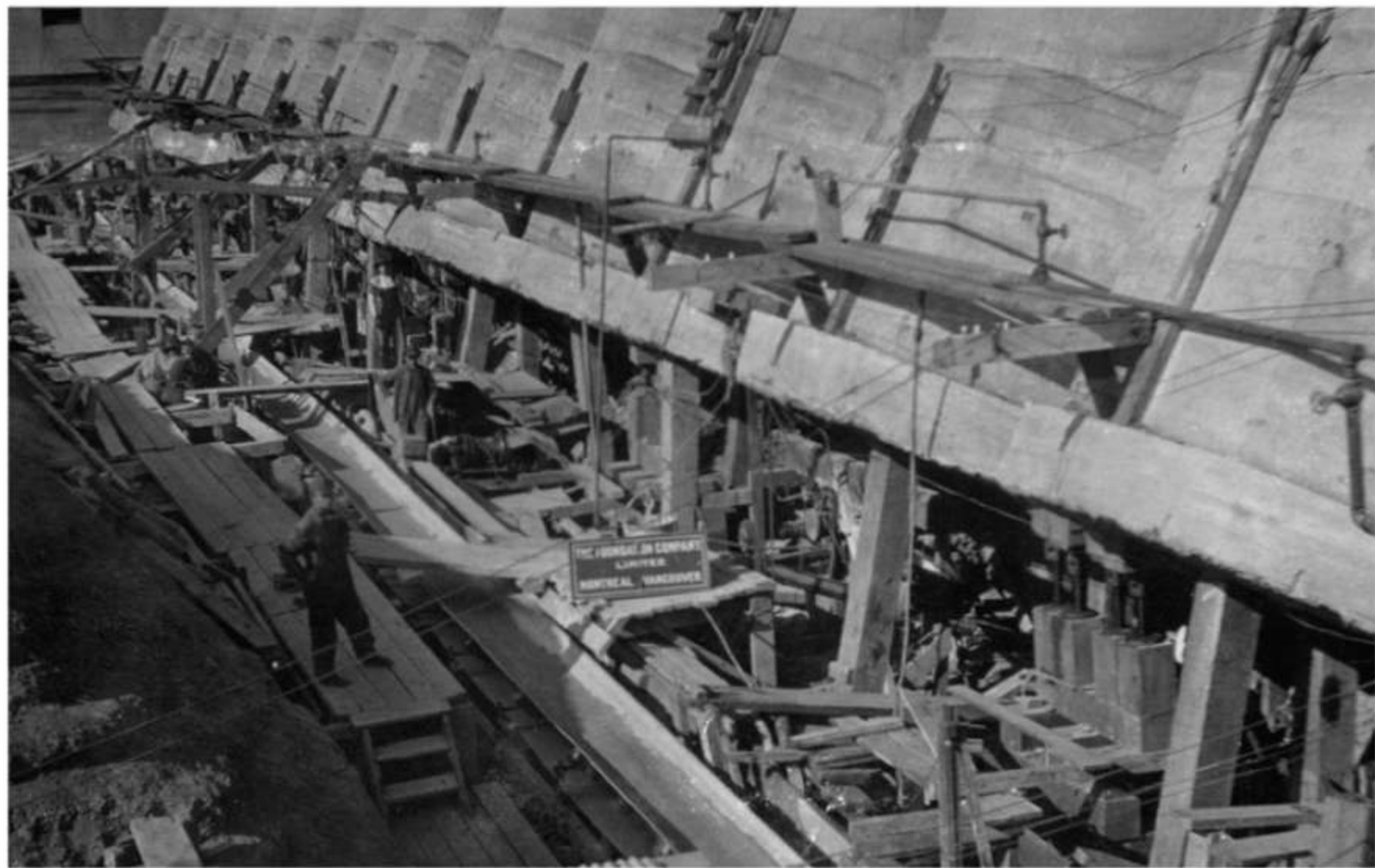
Excavating
Between
Workhouse and
Bins



East Side of Mat Supported on Posts & Screws



Bracing in East Trench



Shores Under East Side of Mat



Earth Under Bins Failing



Controlling Movement Before Setting Jacks



Site of Accident to A.
Perrault

- Row K to 16 deg
- Row I to 8 deg
- Row H to vertical

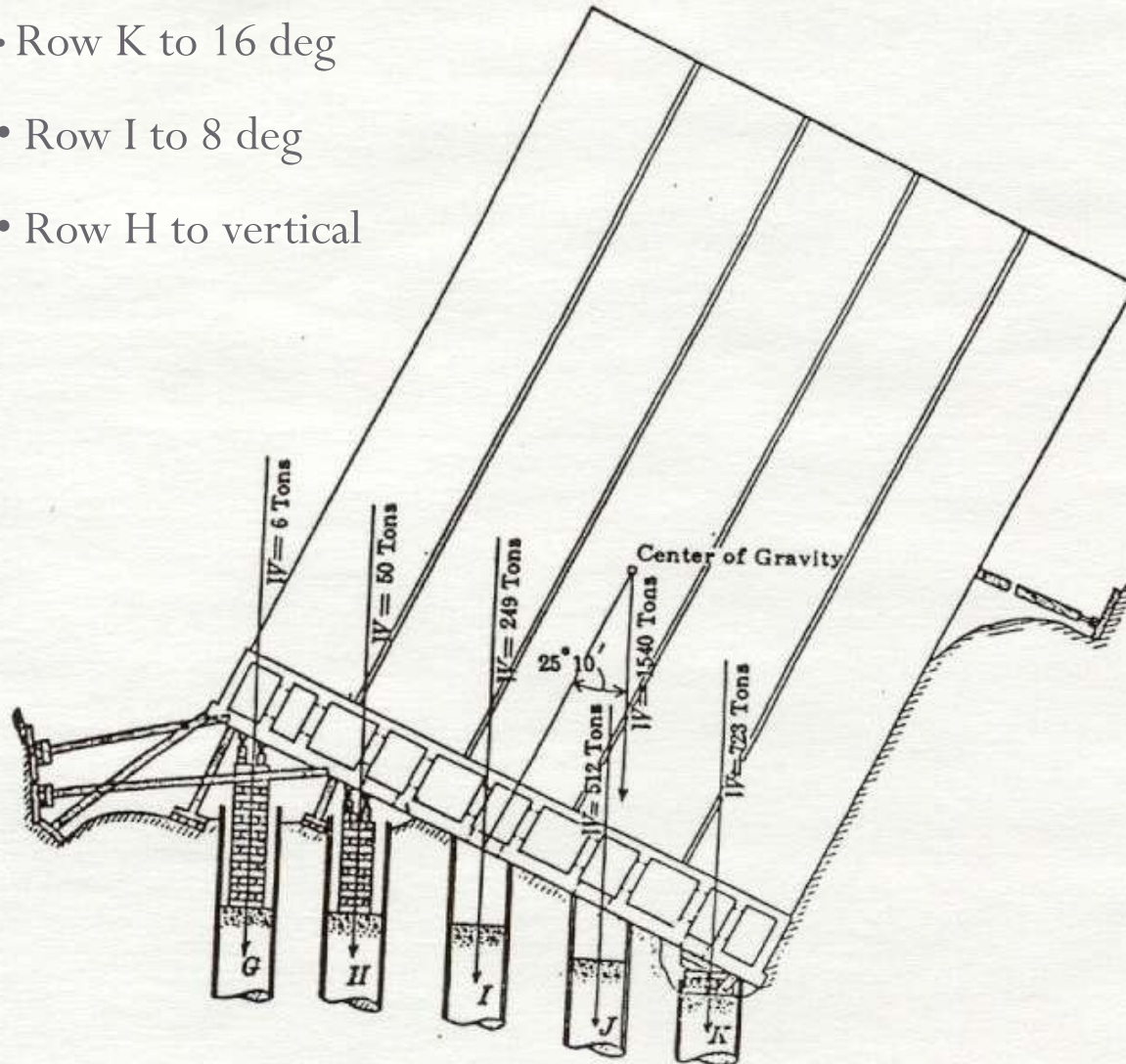
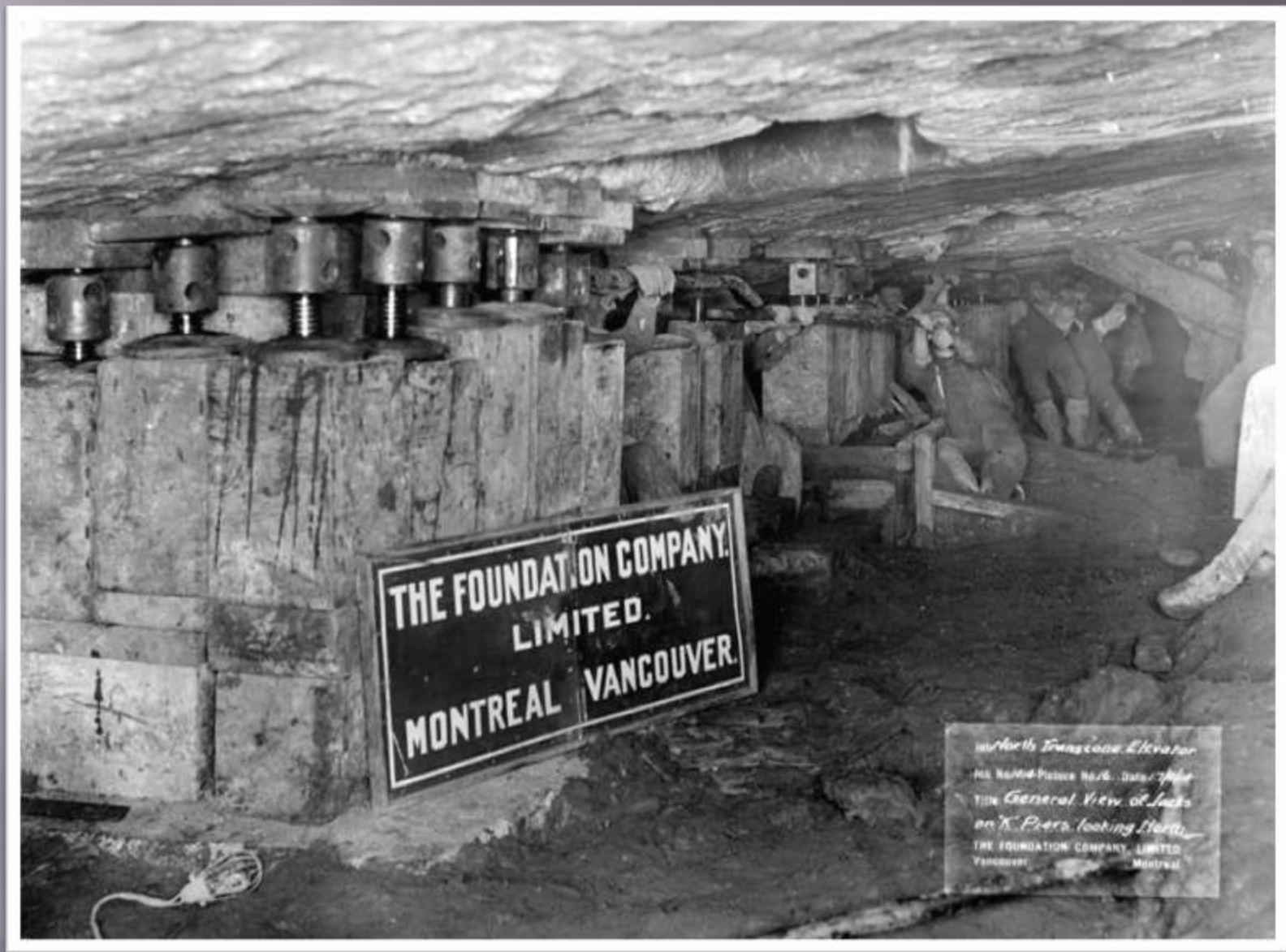


FIG. 14.

The “Revised” Plan to Tip & Lift The Structure



Cross Bracing in Conveyor Tunnel (left) & Steam
Powered Jackhammer (right)



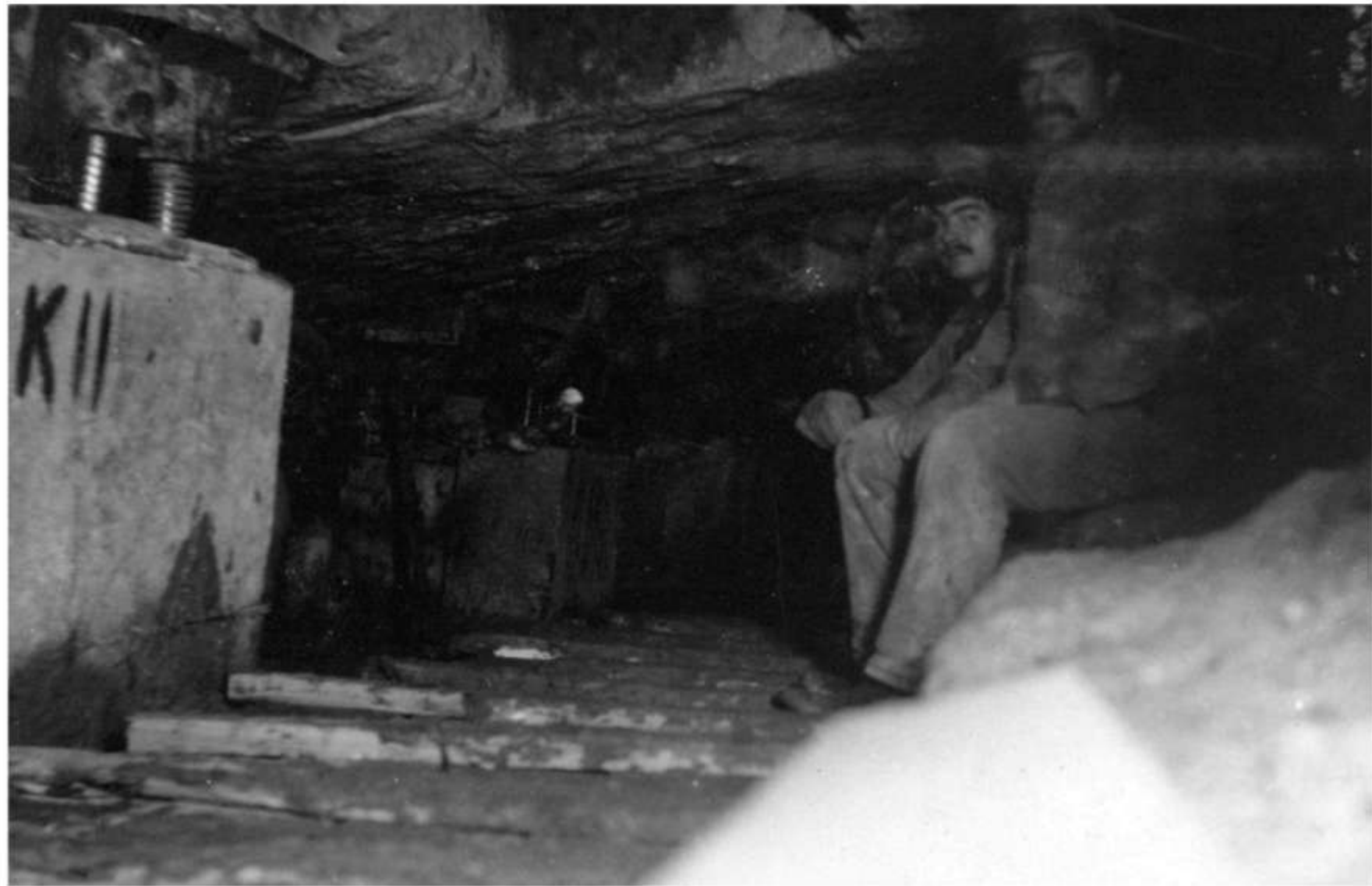
Jacks on "K" Row of Piers – Note Hole Cut Through Bin Slab



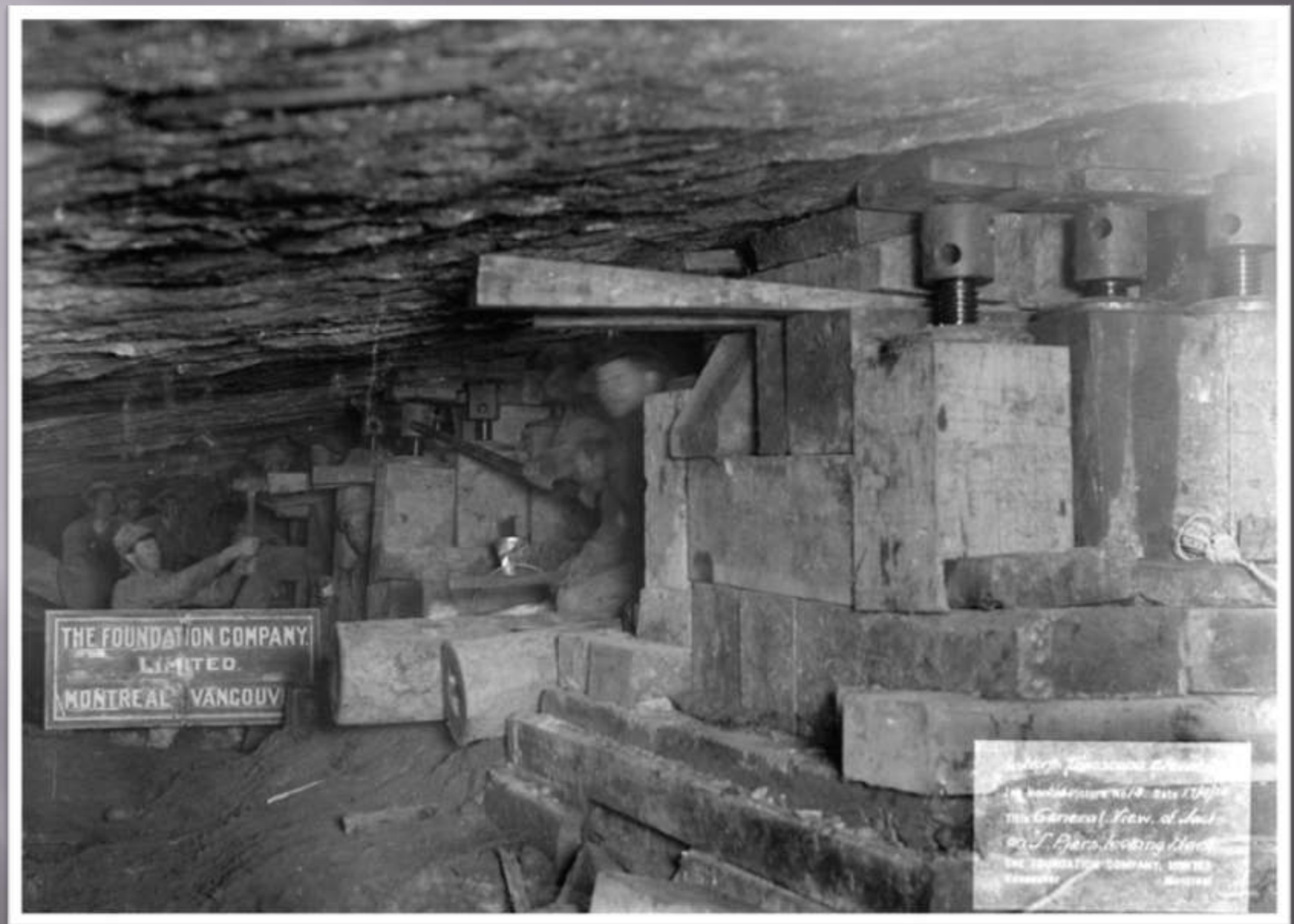
Jacking Unit on "K" Row



Crib Leaning on "K" Pier Due to Eastward
Movement of 2.5 Feet



Rest Period on "K" Row Jacking Operations



View of Jacks on "J" Row of Piers

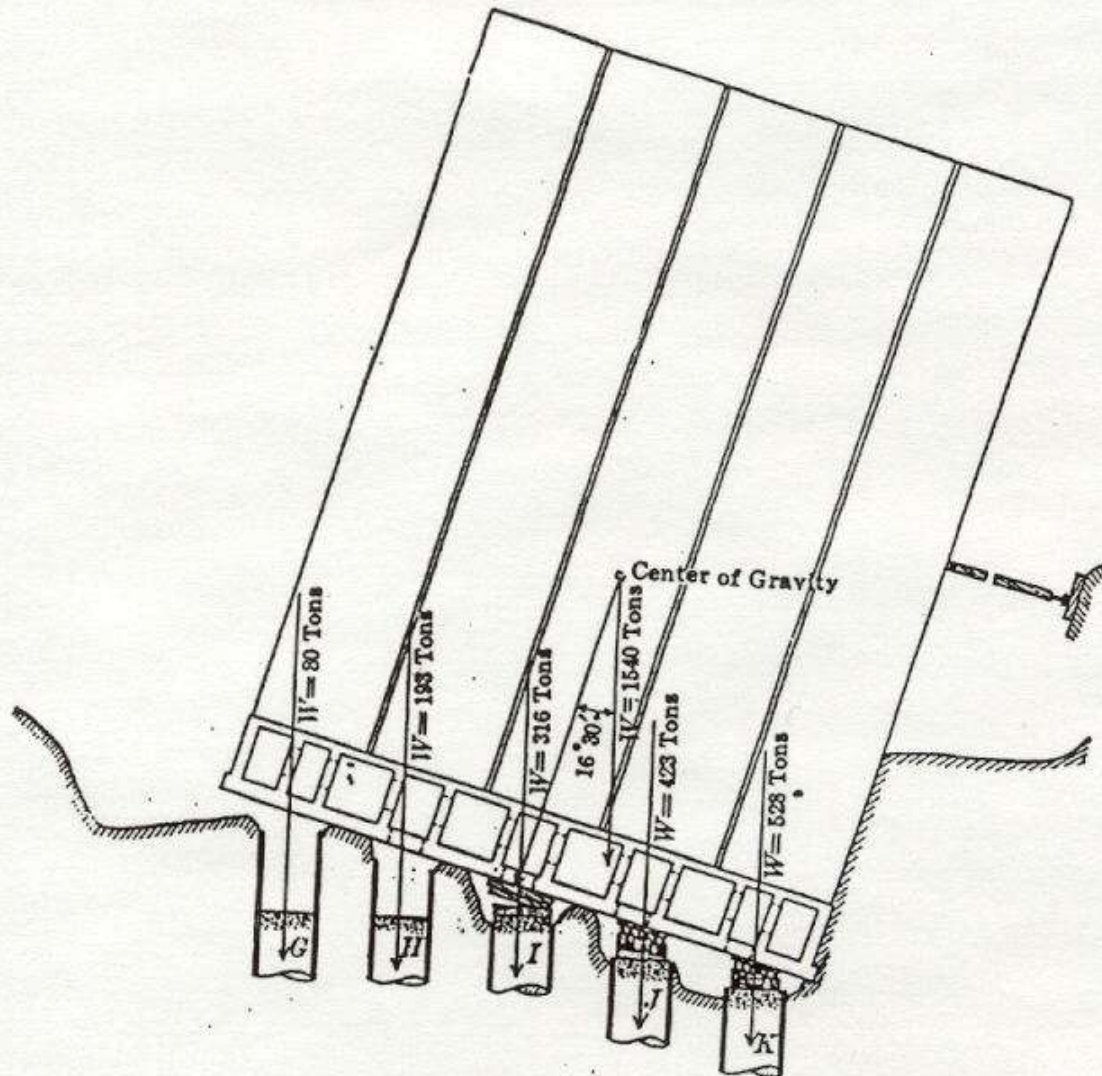
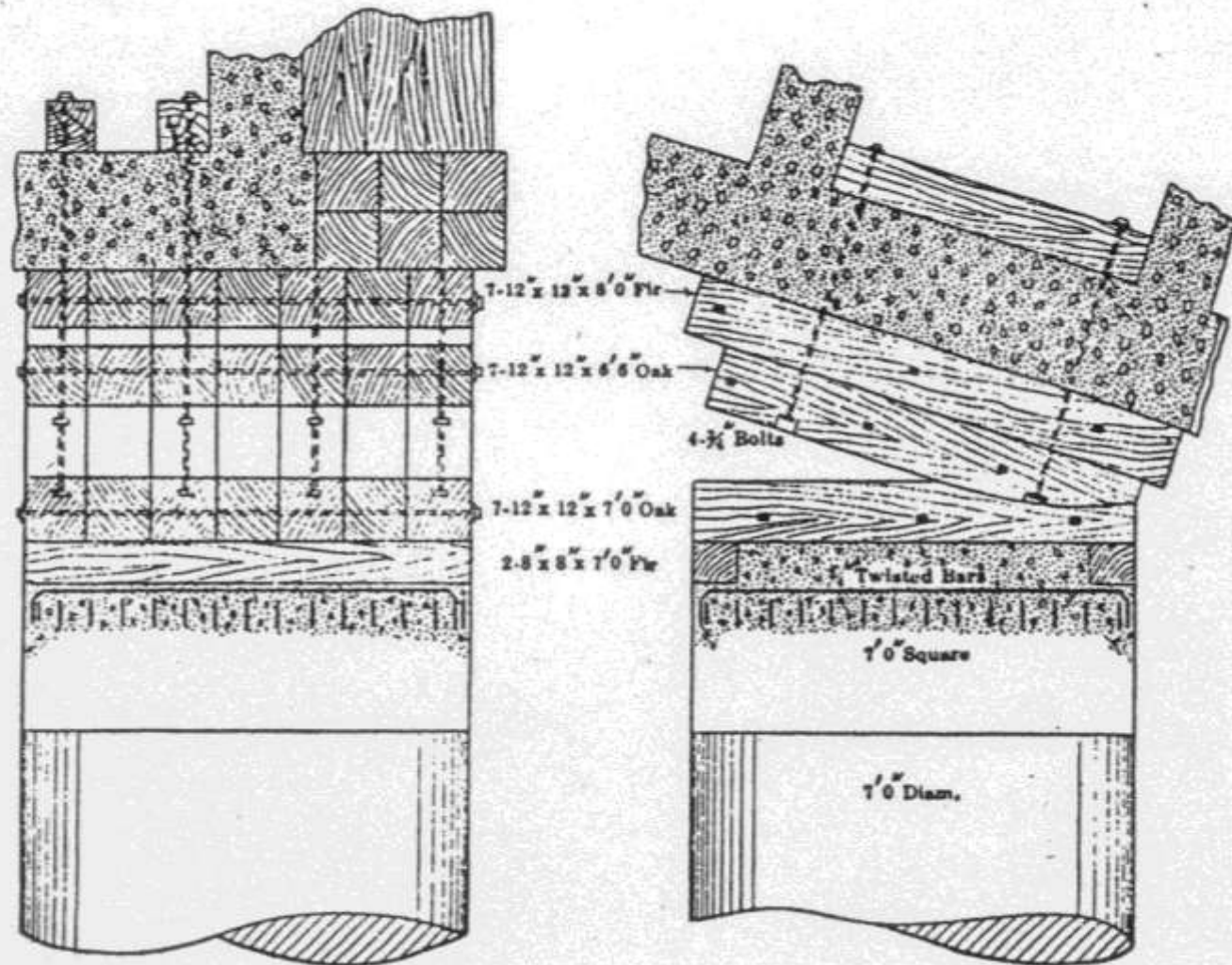


FIG. 16.

Fulcrum on "I" Row of Piers



ARRANGEMENT OF TIMBERING ON "I" PIERS

Fig. 15

Timber Rocker on "I" Row of Piers



“G” and “H” Row Screws Under Mat

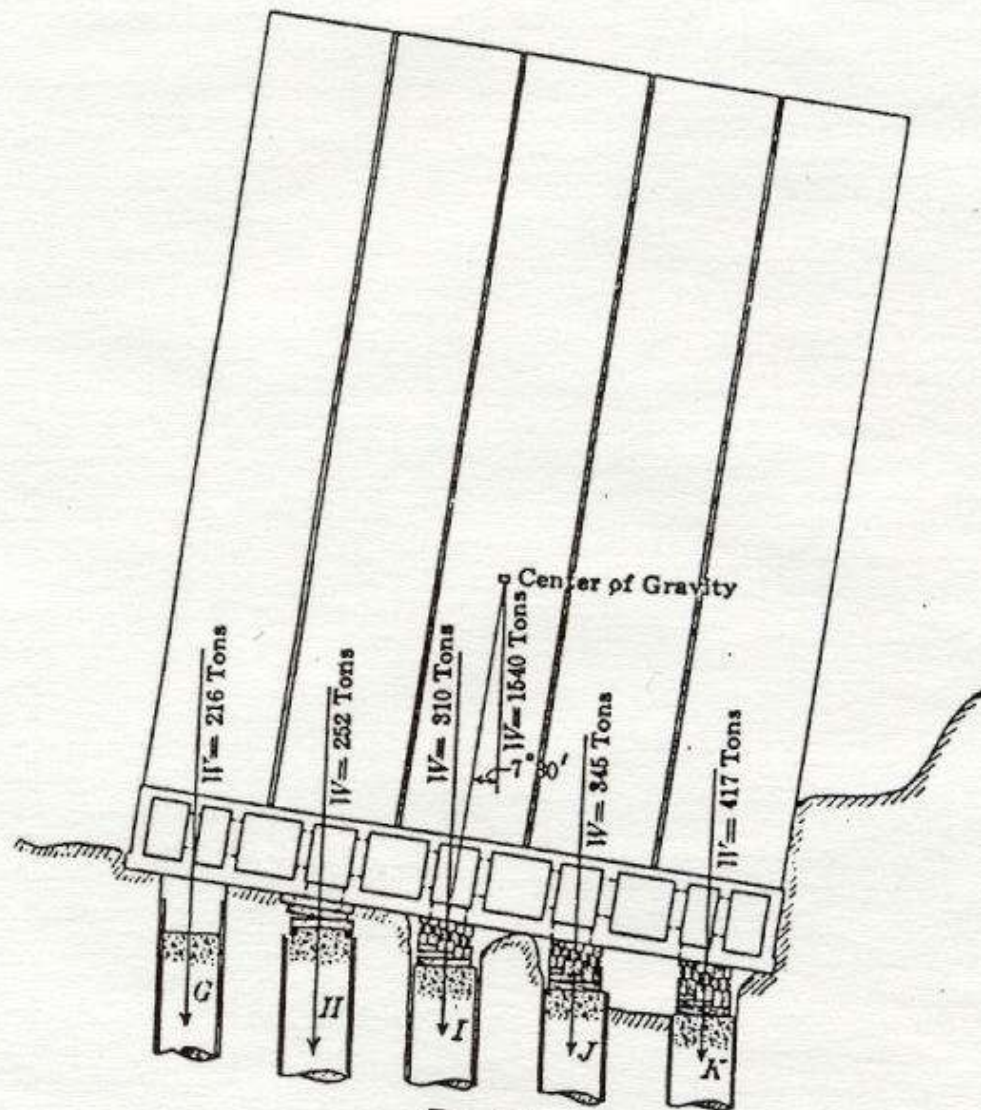


FIG. 19.

Fulcrum on "H" Row of Piers

Job *North Transcona Elevator*
Job No. *100* Picture No. *15* Date *11/14*
Title *North End Showing*
Angle of Bins (9°00')
THE FOUNDATION COMPANY, LIMITED
Vancouver Montreal



N End Showing Angle of Bins (9 deg)



Broken Screw From "G" Row



Cribbing and Jacks on "G" Row



Slacking Screws on "G" Row



Cribbing and Jacks on "G" Row

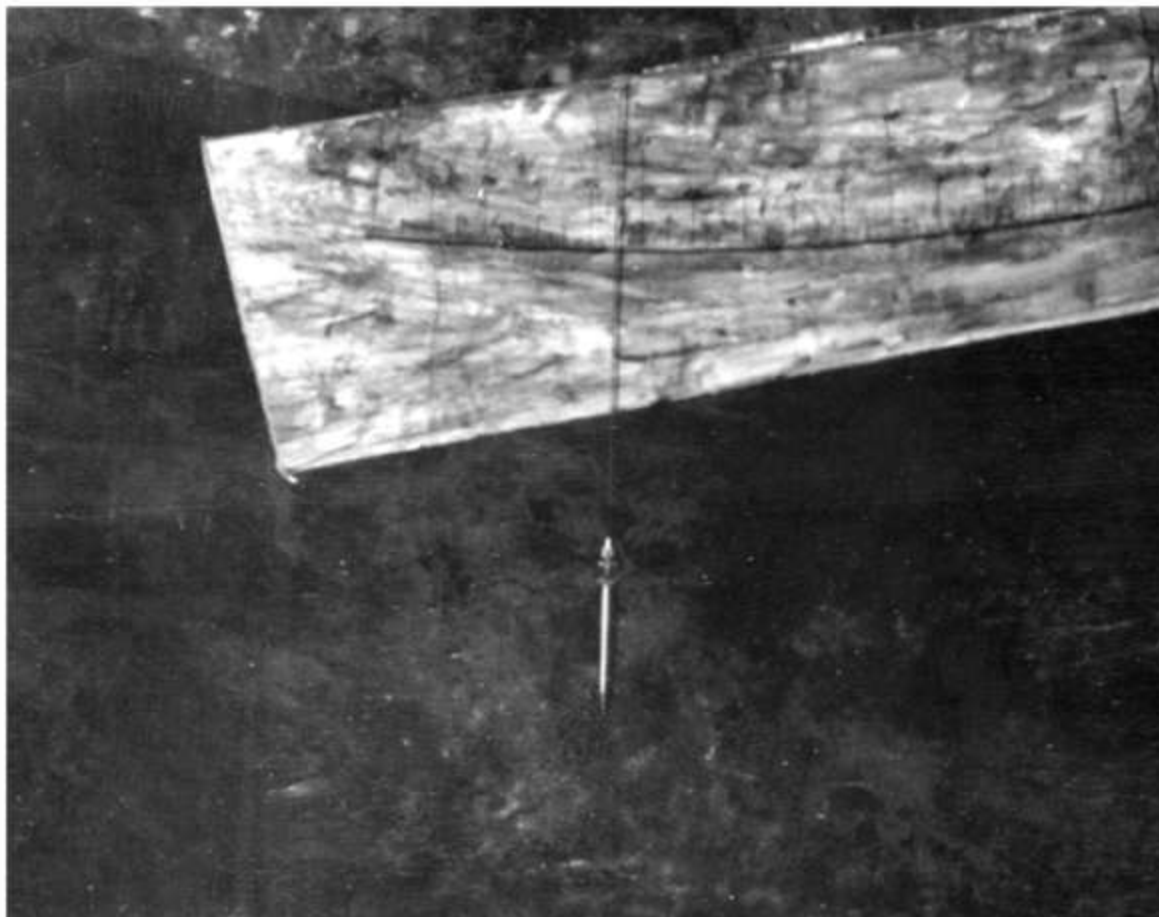


Wells, Cribbing, Jacks & Inclined Posts Under Mat



Experiment to Show Pier Loading Under Bins

Protractor in Bins (bottom) &
Plumb Bob (right) Showing
Inclination of Binhouse





Pay Day For Jacking Crew!



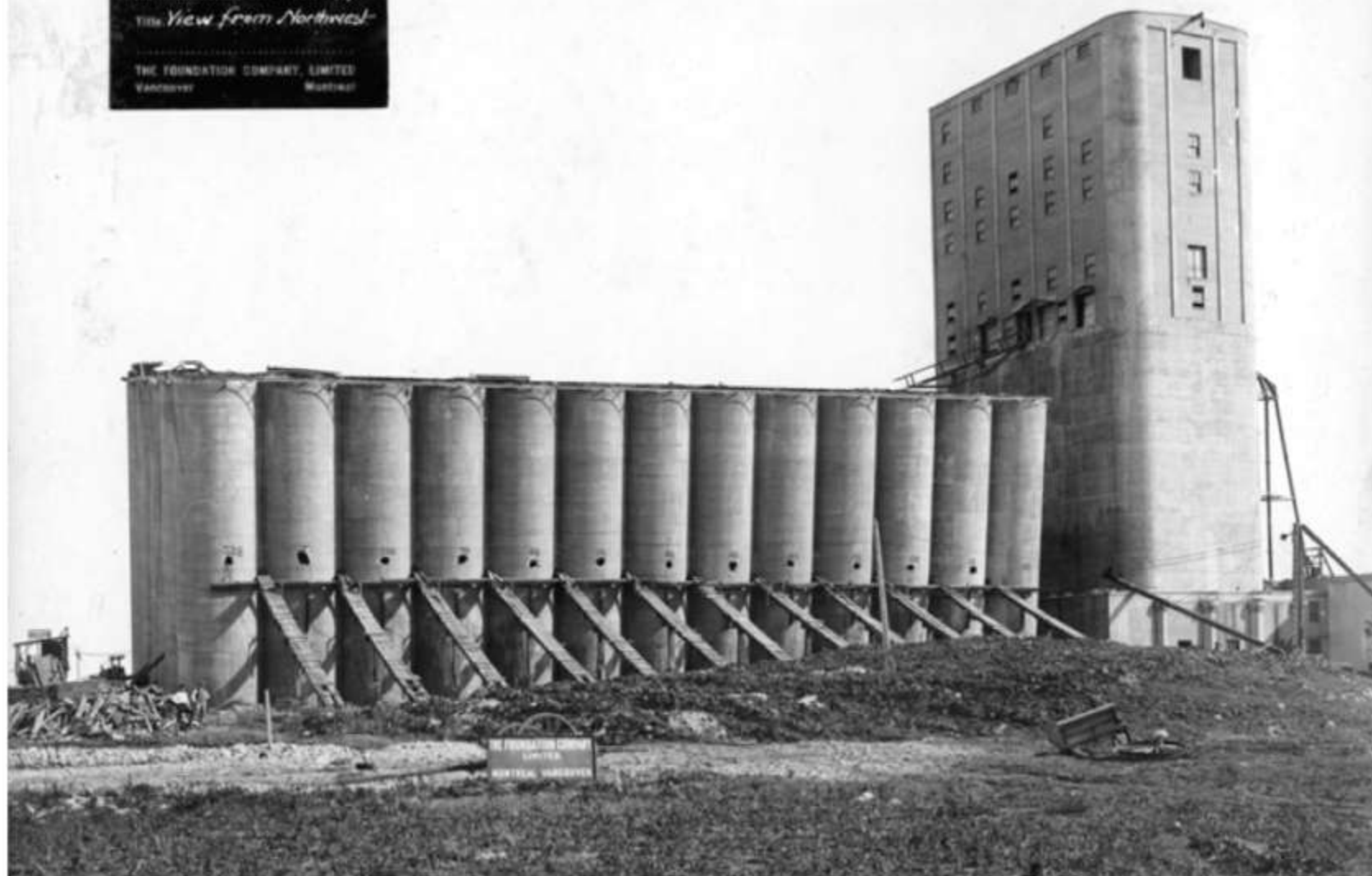
View From Southeast During Righting



1st North Fraser Bridge
1st North Fraser Bridge No. 10 Date 12/1/4
Title View From Southwest
THE FOUNDATION COMPANY, LIMITED
Vancouver Montreal

View From Southwest During Righting

101 North Transcon Elevator
Job No. 101-Picture No. 21 Date 11/14/4
Title *View from Northwest*
THE FOUNDATION COMPANY, LIMITED
Vancouver Montreal



View From Northwest During Righting



Scaffold Supporting Centrifugal Pump in Chicago Well



Concrete Mixer

Job NORTH TRANSFER ELEVATOR
Job No. 22 Date 7/12/14
Title VIEW FROM
SOUTH EAST
THE FOUNDATION COMPANY, LIMITED
Vancouver Montreal



View From Southeast After Righting

Job NORTH TRANSCONA ELEVATOR
Job No. 1014 Picture No. 28 Date 17/12/14
Title NORTH END OF BINS
AFTER STRAIGHTENING
THE FOUNDATION COMPANY, LIMITED
Vancouver Montreal



North End of Bins After Righting

THE NORTH TRANSCONA ELEVATOR
Job No. 1044 Picture No. 24 Date 7/22/14
Title N.W. CORNER OF BINS
AFTER STRAIGHTENING
THE FOUNDATION COMPANY, LIMITED
Vancouver Montreal



Northeast Corner After Righting



Messer's Barbier, Rankin, Ross & Lewis



Site of Accident to Gordon Ferris



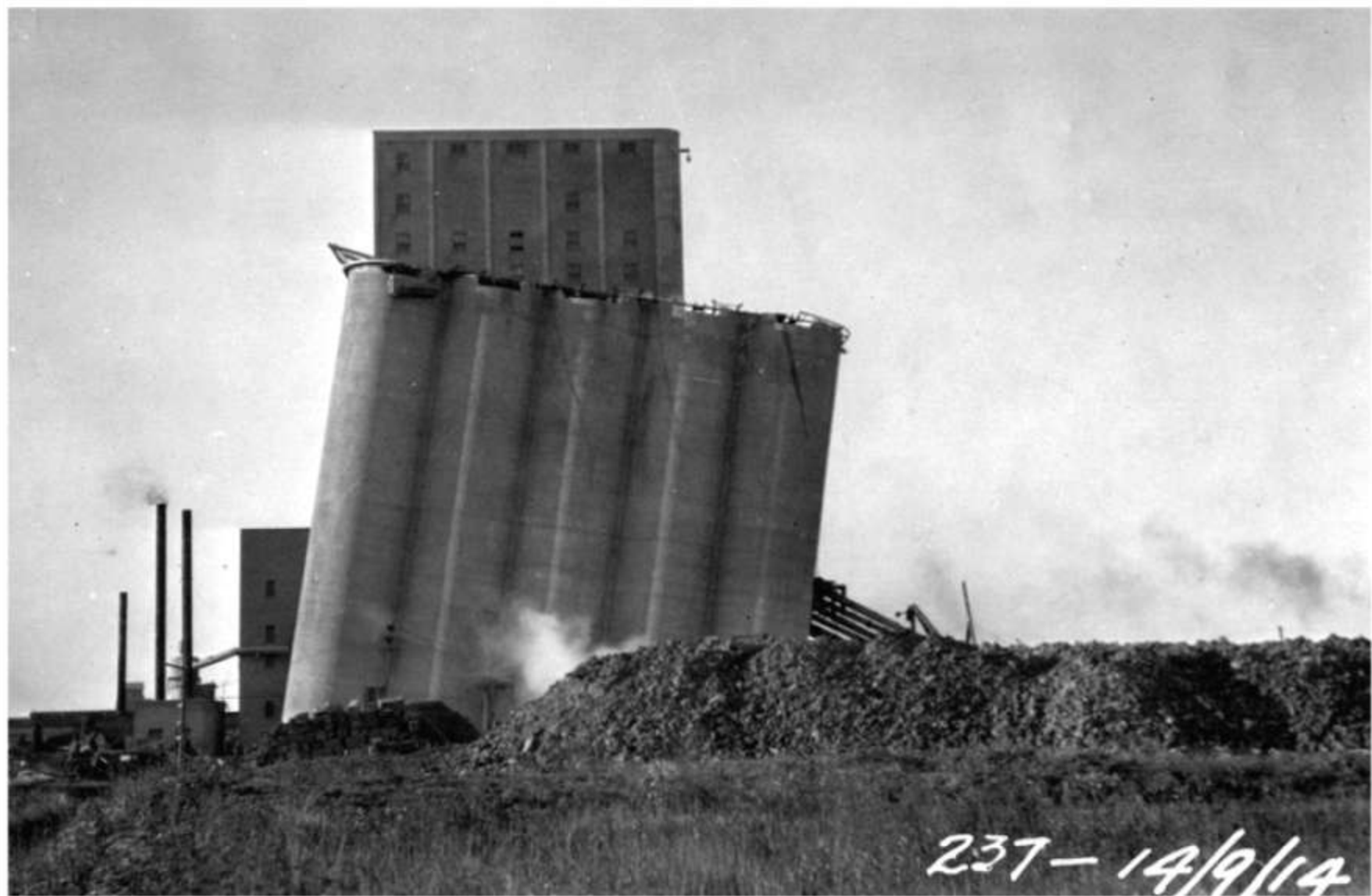
Progress View of North End of Bins



Progress View of North End of Bins



Progress View of North End of Bins



Progress View of North End of Bins



Progress View of North End of Bins



Bins Righted – October 17, 1914 at 10:15 AM



West Side of Bins After Righting



Northwest Corner of Bins After Righting



Grading West Side of Bins

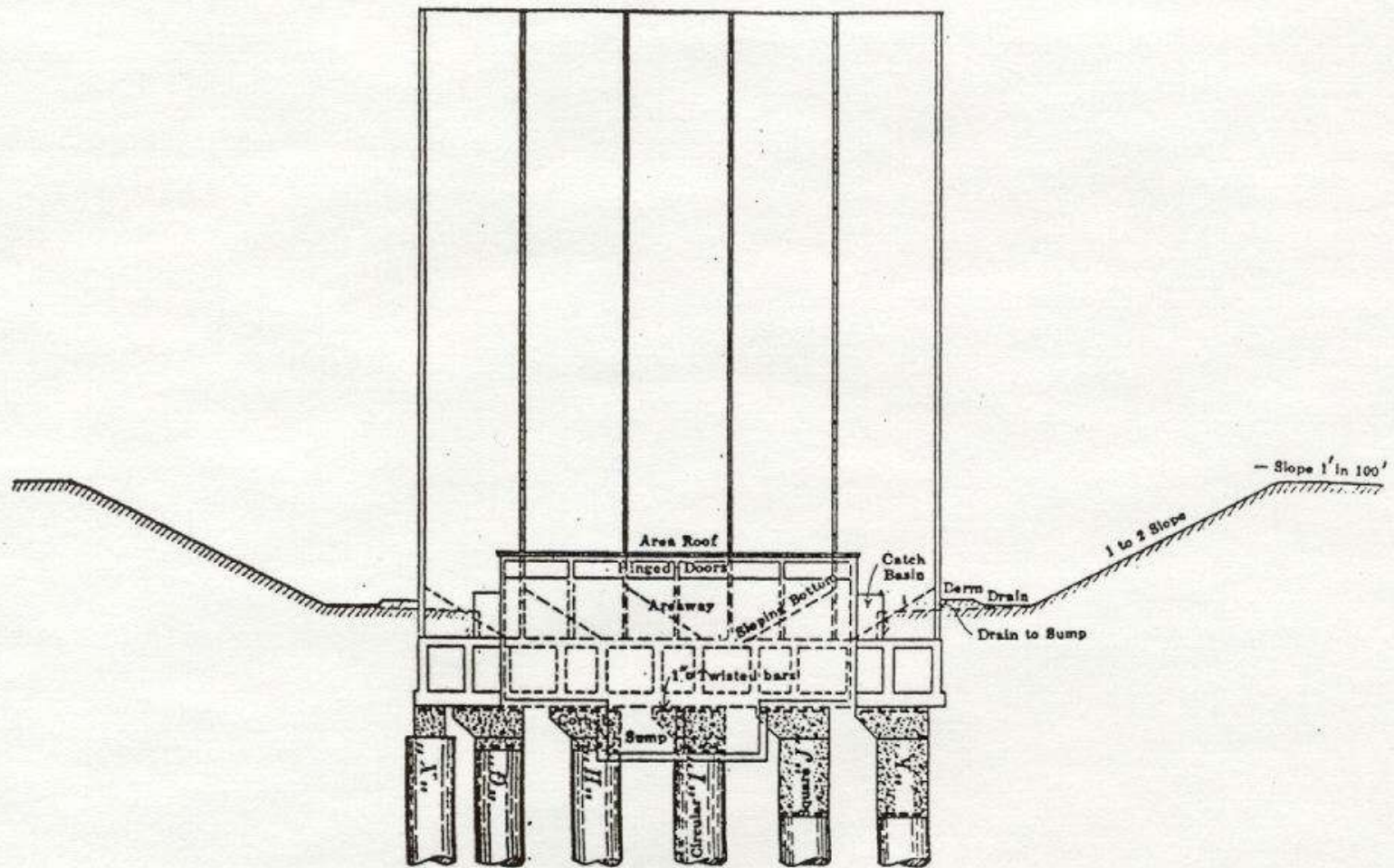


FIG. 20.

Sump in Basement at North End